



SOF NATIONAL CYBER OLYMPIAD

Total Questions : 35

Time : 1 hr.

PATTERN & MARKING SCHEME			
Section	(1) Logical Reasoning	(2) Computers & IT	(3) Achievers Section
No. of Questions	5	25	5
Marks per Ques.	1	1	2

SYLLABUS

Section – 1 : Patterns, Alphabet Test, Coding-Decoding, Mirror Images, Embedded Figures, Geometrical Shapes and Solids, Ranking Test, Direction Sense Test, Days and Dates & Possible Combinations, Analogy and Classification.

Section – 2 : About Computers (General Information), Evolution of Computers, Parts of Computer, Input and Output Devices, Hardware, Software, MS-Word(Formatting a Word document, Font group, Format Painter, Search using Find and Replace option, Checking Spelling and Grammar using Thesaurus), Using Windows 7, Introduction to Internet and Its Uses, Computer Networks, MS-Paint, Latest Developments in the field of IT.

Section – 3 : Higher Order Thinking Questions - Syllabus as per Section – 2.

Questions are based on Windows 7 and MS-Office 2010.

LOGICAL REASONING

1. What is the next number in the pattern below?

125, 150, 175, 200, ...?....

- (A) 205 (B) 215 (C) 225 (D) 250

2. Choose the correct mirror image of the word, if the mirror is placed vertically to the left.

FIXING

- (A) GNIXIF (B) ƆNIXIF (C) ƆNIXIF (D) GNIXIF

3. In a certain code, 3456 is coded as ROPE, 15526 is coded as APPLE, then how is 54613 coded?

- (A) RPPEO (B) ROPEA (C) POEAR (D) PAREO

COMPUTERS AND INFORMATION TECHNOLOGY

4. Internet can be used for _____.

- (A) Checking exam results (B) Chatting
(C) E-mailing (D) All of these

5. When your desktop is cluttered with open windows, you can use _____ to select a single window and minimize the rest.

- (A) Aero Peek (B) Aero Shake (C) Aero Steer (D) Aero Flip

6. Windows 7 is what type of software?

- (A) Utility Software (B) Application Software
(C) System Software (D) Language Processor

7. This key is used to move cursor to the beginning of the line or the screen depending on the software used. Identify the key.





- (A)  (B)  (C)  (D) 

8. 1024 bytes equals _____.

- (A) 1 Kilobyte (KB) (B) 1 Megabyte (MB) (C) 1 Gigabyte (GB) (D) 1 Character

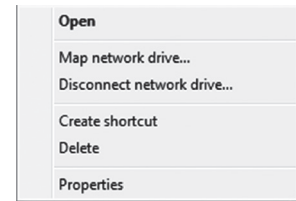
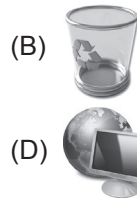
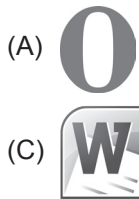
9. Who among the following is known as father of computers ?

- (A) Charles Babbage (B) John Napier (C) Blaise Pascal (D) Herman Hollerith

10. While working with MS-Paint which option is used to add name to your drawing?
 (A) Text tool (B) Pencil tool (C) Air brush tool (D) Erase tool
-
11. Which of the following is a correct internet address?
 (A) ww.yahoo.com (B) www.cartoonnetwork.co
 (C) www.hotmail.com (D) www.indiatime.comm
-
12. In MS-Word 2010, which colour wavy line under a word indicates a spelling or grammar mistake?
 (A) Red (B) Green (C) Yellow (D) Both (A) and (B)
-
13. Internet is used for audio and video calling across geographies. A popular tool for such internet calls is _____.
 (A)  (B)  (C)  (D) 

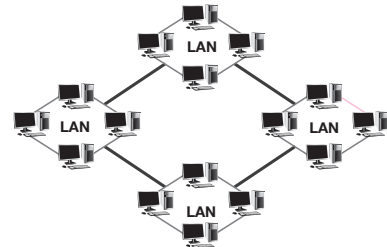
ACHIEVERS SECTION

14. A pop-up menu is displayed when we do right click on a desktop icon. Which of the following options holds the pop-up menu depicted in the given image in Windows 7?



15. Which of the following types of network is used to connect the LANs shown in the given image?

- (A) CAN
 (B) PAN
 (C) WAN
 (D) SAN



SPACE FOR ROUGH WORK

ANSWERS

1. (C) 2. (B) 3. (C) 4. (D) 5. (B) 6. (C) 7. (B) 8. (A) 9. (A) 10. (A) 11. (C) 12. (D) 13. (A) 14. (D) 15. (C)